

**9. 0122133**

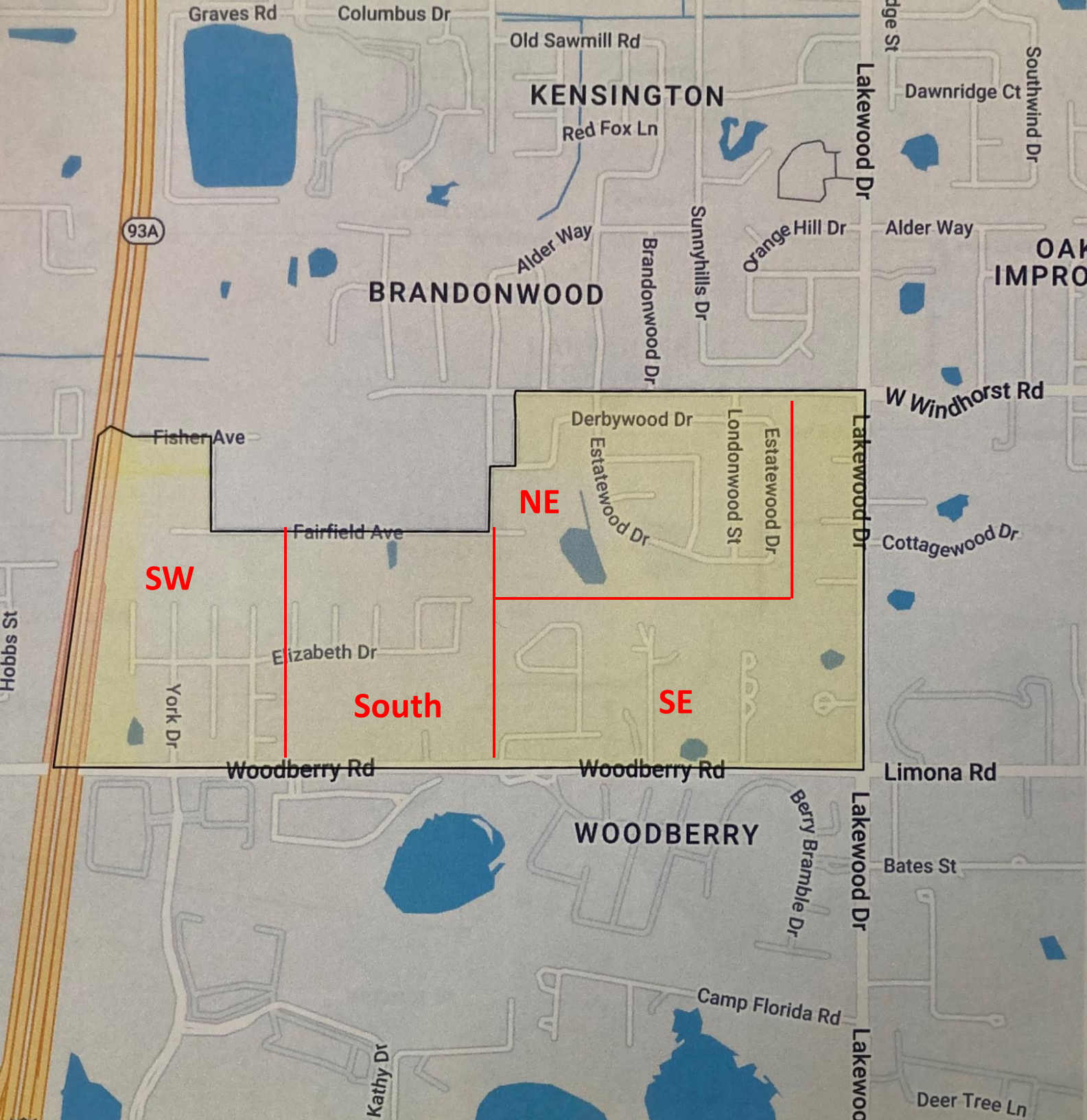
Brandon, FL-33510

---

houses	485
apartments	0
<b>TOTAL</b>	<b>485</b>

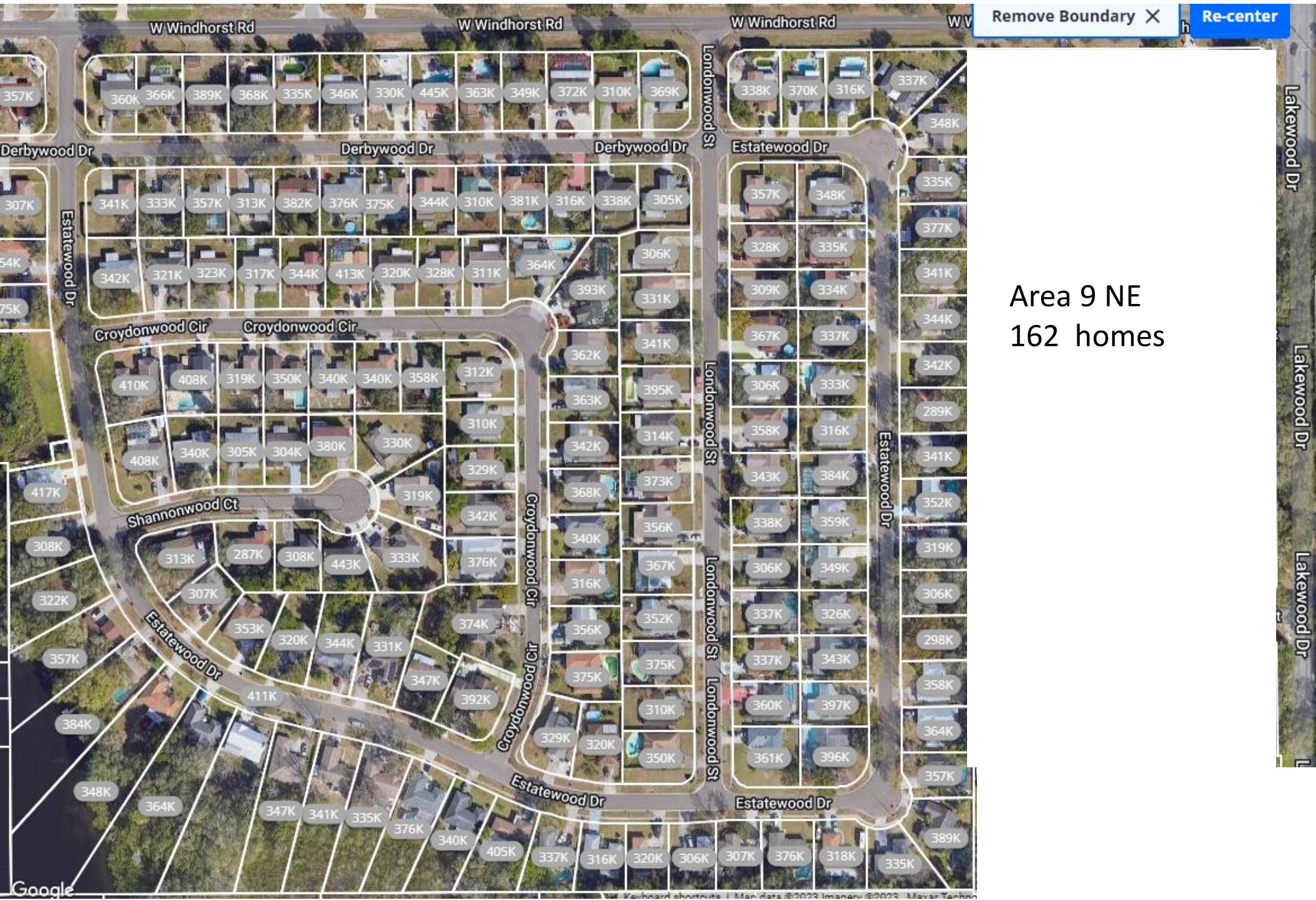
---

Please email the code:  
**33510-0122133**  
to [maps@SaturateUSA.org](mailto:maps@SaturateUSA.org)  
when this map has been  
completed.



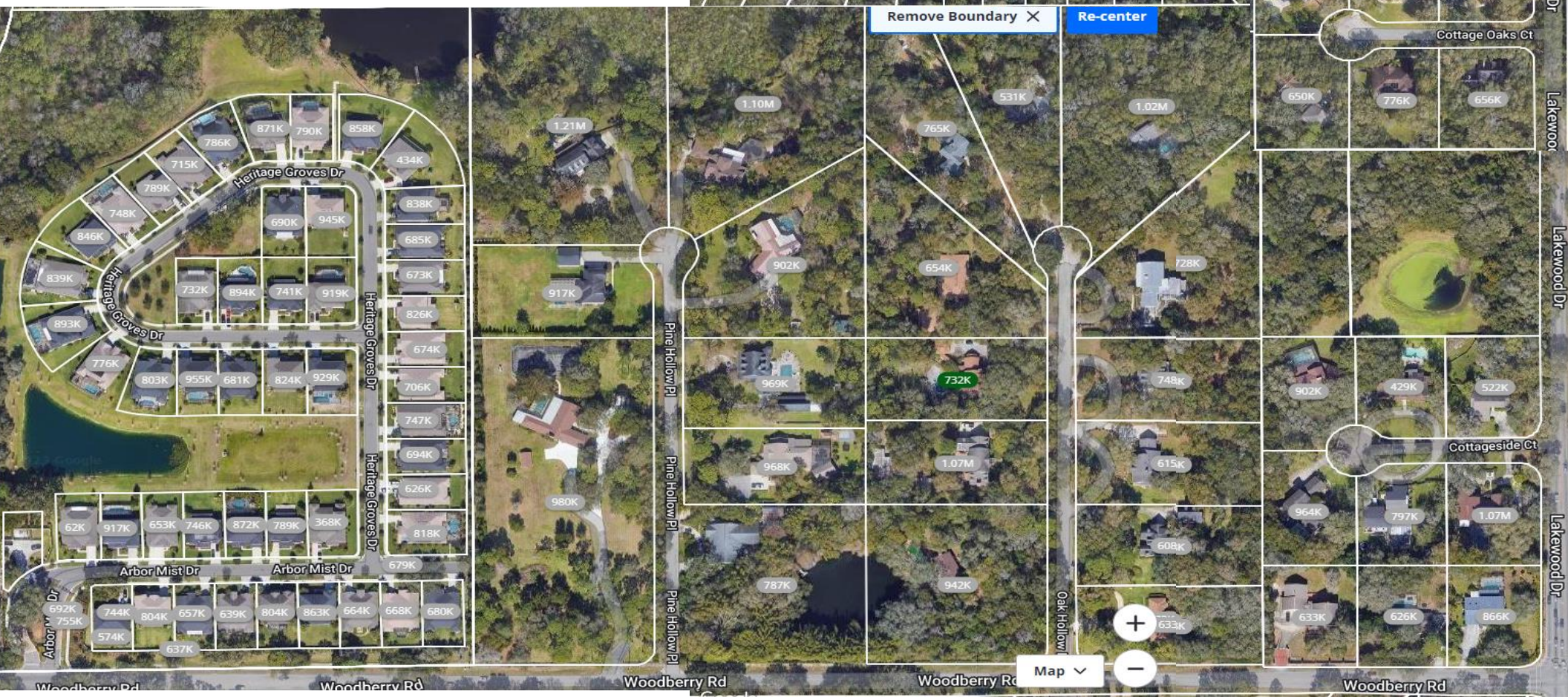
Saturate

(usa)



Area 9 NE  
162 homes

Area 9 SE  
96 homes



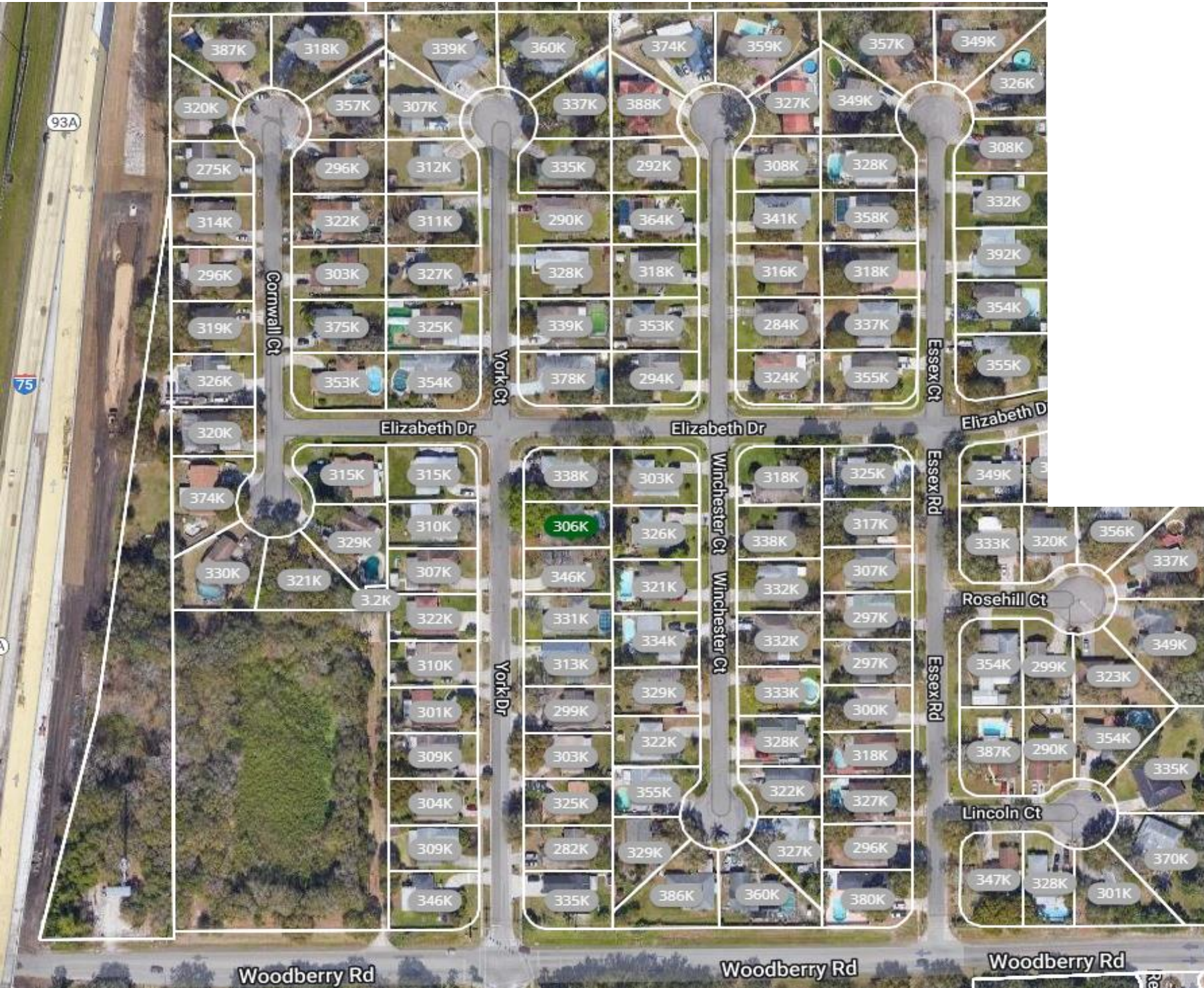


Area 9 South  
98 homes

Enter on Essex Rd



# Area 9 SW, 136 homes



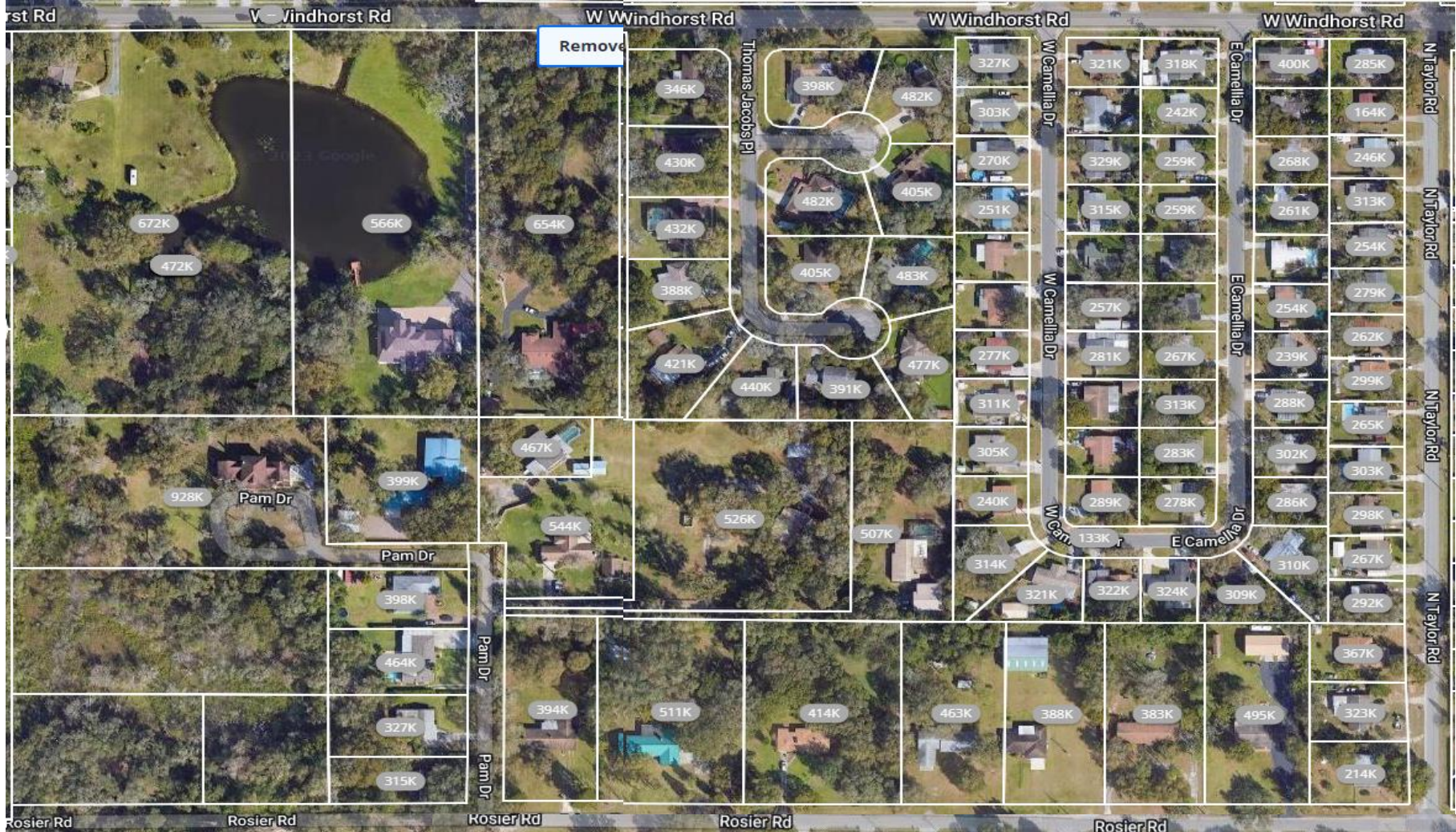
10. 0123011

Brandon, FL-33510

houses	377
apartments	0
TOTAL	377

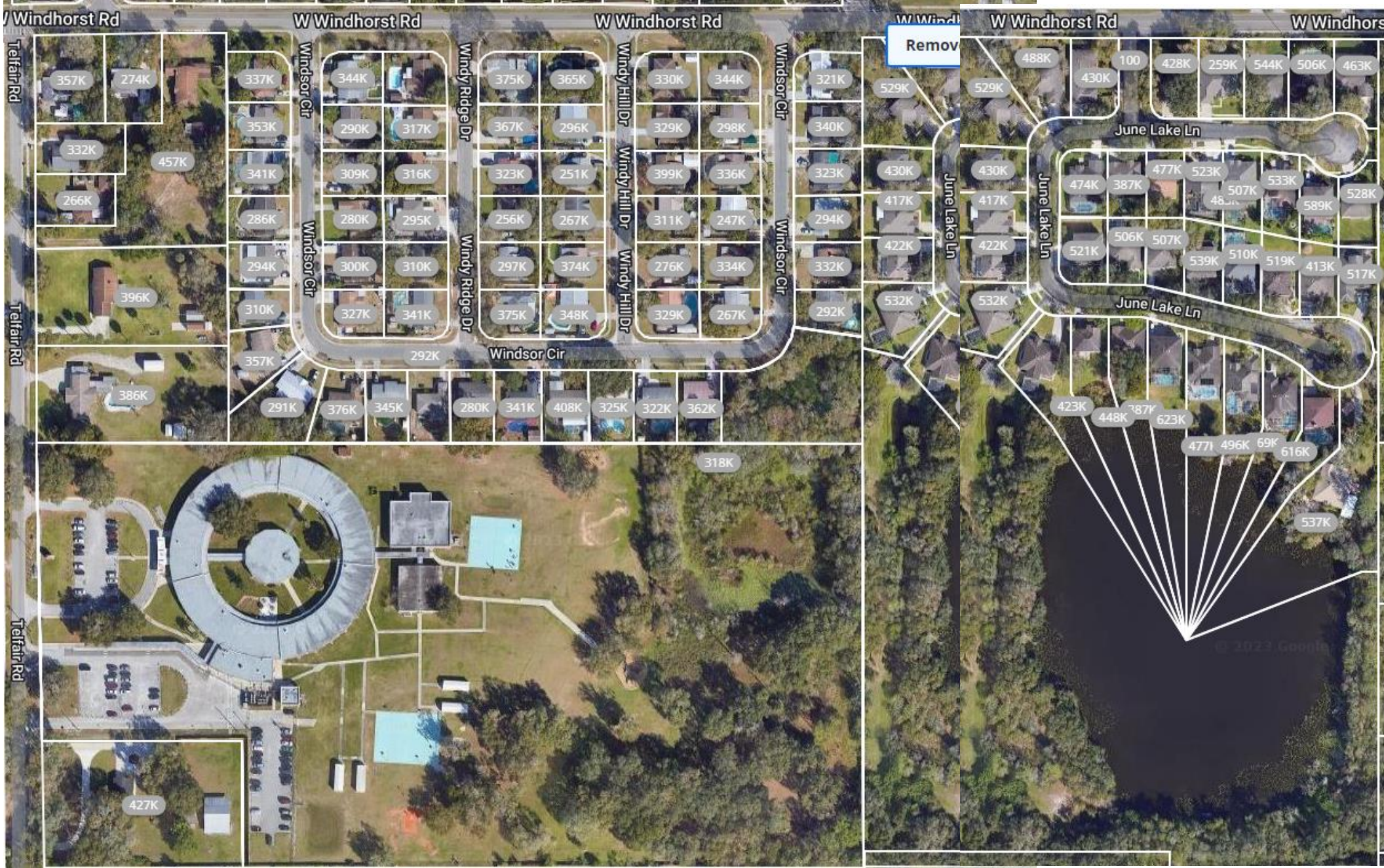
Please email the code:  
**33510-0123011**  
to [maps@SaturateUSA.org](mailto:maps@SaturateUSA.org)  
when this map has been  
completed.





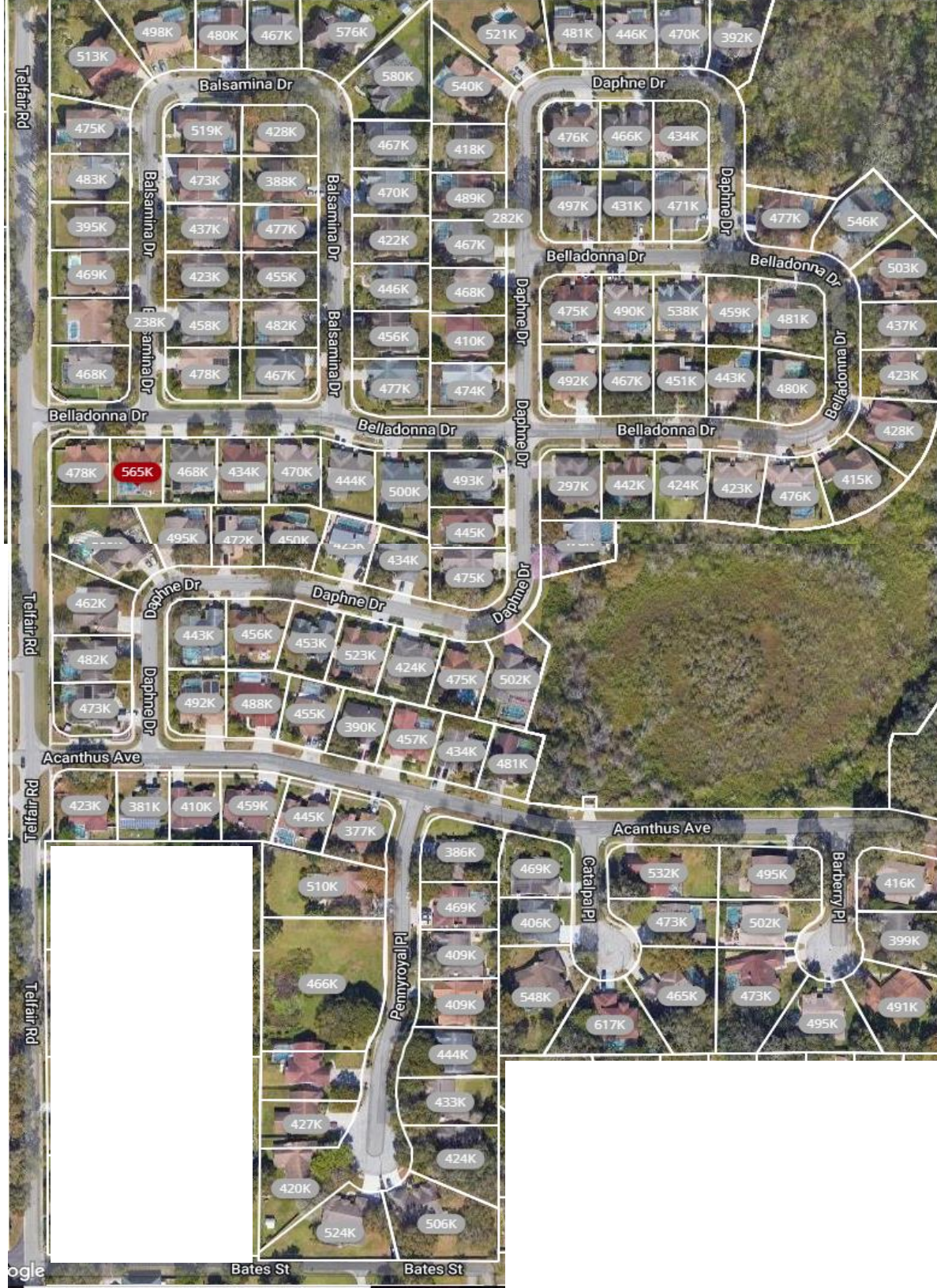
Area 10 NE  
115 homes





Area 10 NW  
104 homes

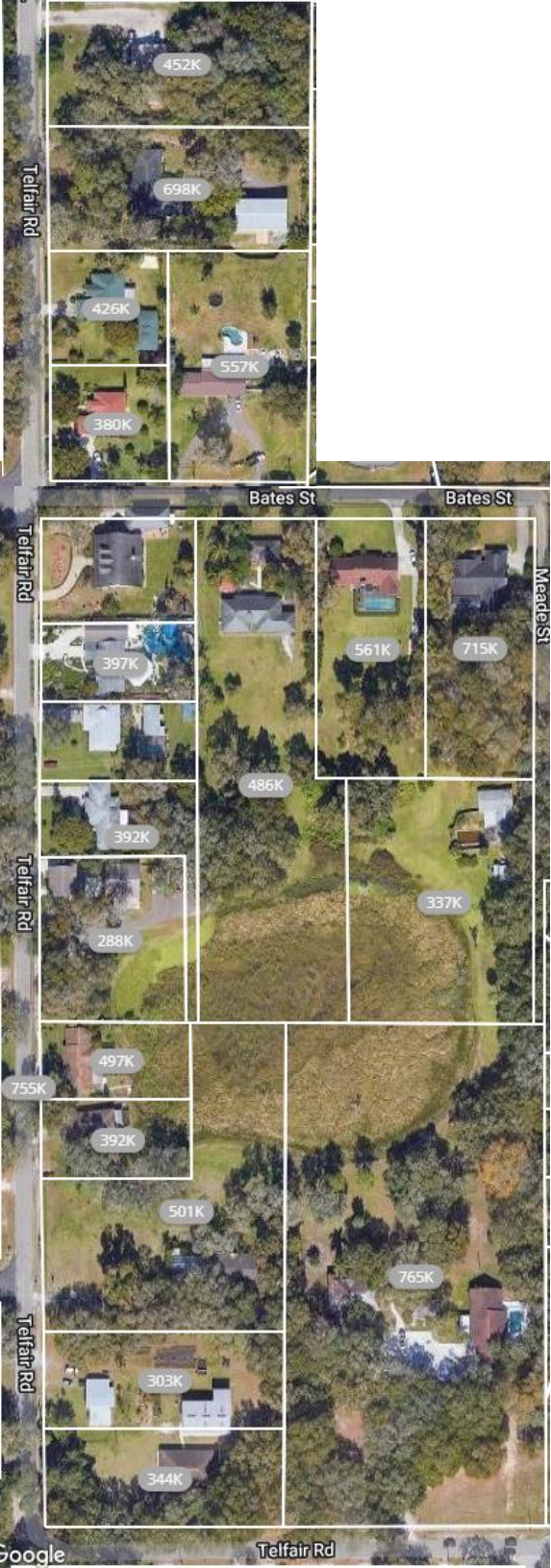




Area 10 Central

Timber Pond III

138 homes



Area 10 SW  
20 homes



**11. 0123012**

Brandon, FL-33510

houses	359
apartments	0
<b>TOTAL</b>	<b>359</b>

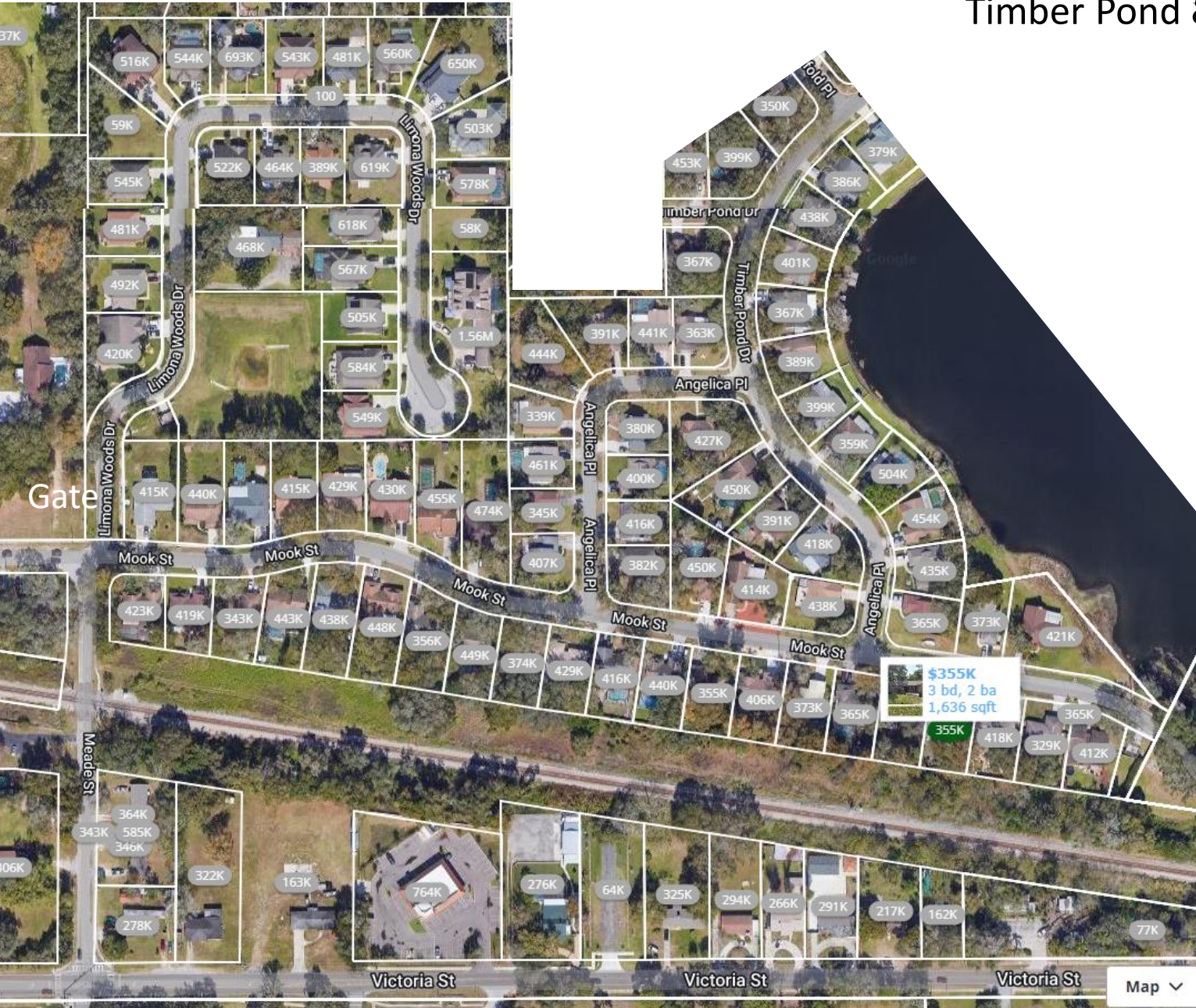
Please email the code:  
**33510-0123012**  
 to [maps@SaturateUSA.org](mailto:maps@SaturateUSA.org)  
 when this map has been  
 completed.



# Area 11 South

Limona Woods (gated) 27 homes

Timber Pond & Meade 76 homes

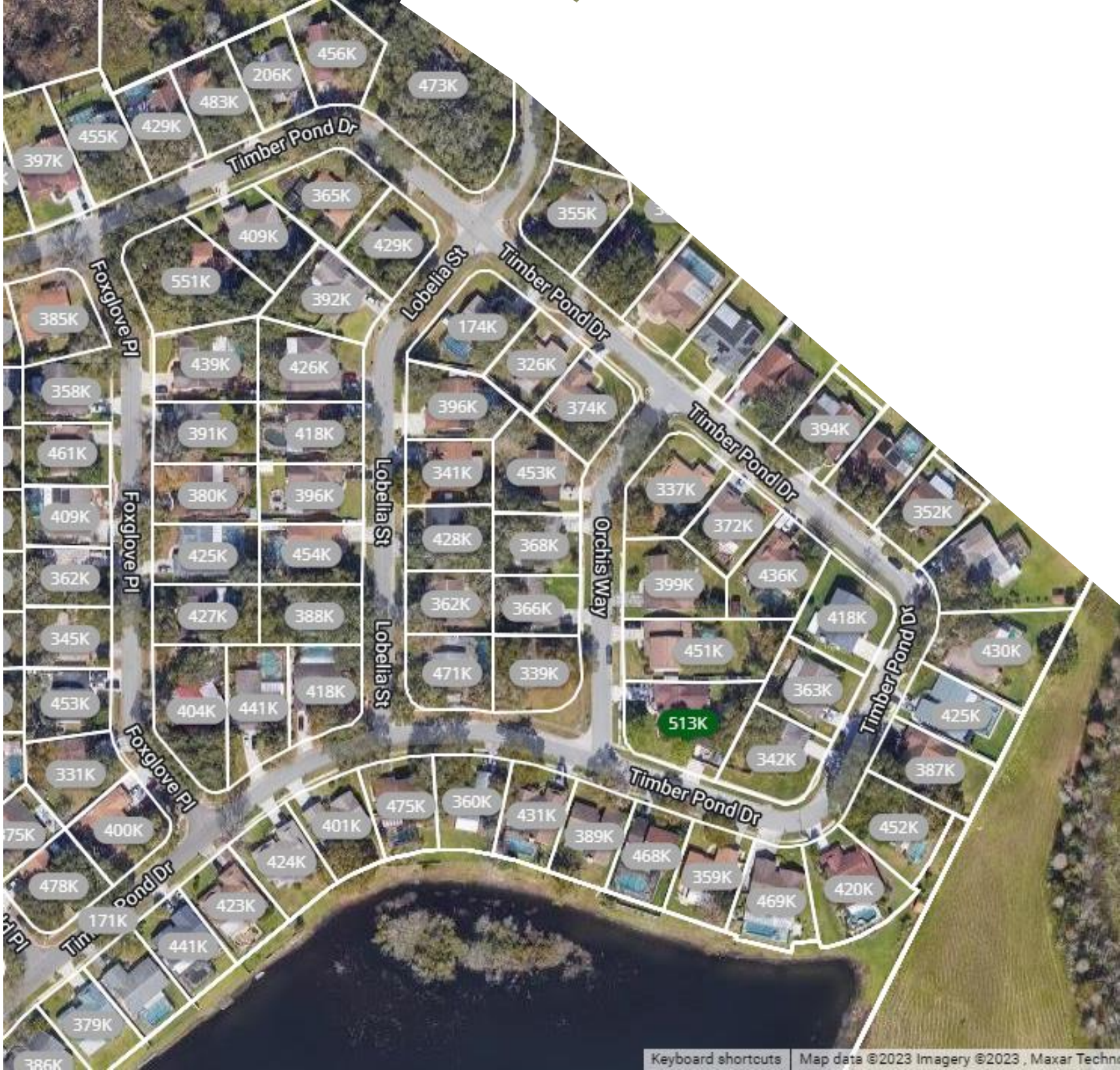


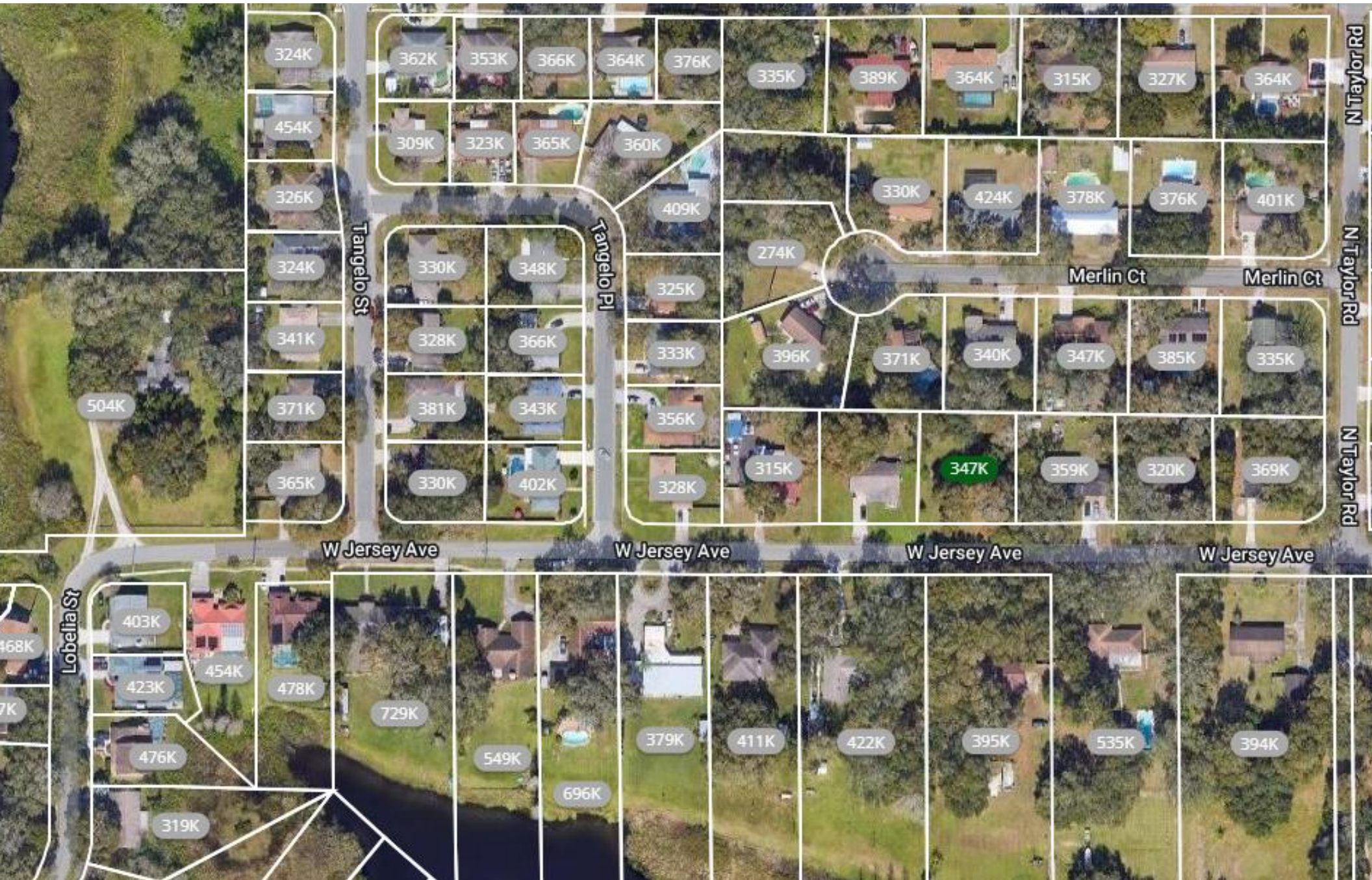


Area 11 West  
 Timber Pond  
 103 homes

(Limona Woods)

Area 11 Central  
Timber Pond  
83 homes





Area 11 NE  
70 homes



# 12. 0123013

Brandon, FL-33510

houses	214
apartments	248
<b>TOTAL</b>	<b>462</b>

Please email the code:  
**33510-0123013**  
 to [maps@SaturateUSA.org](mailto:maps@SaturateUSA.org)  
 when this map has been  
 completed.





Area 12 NW



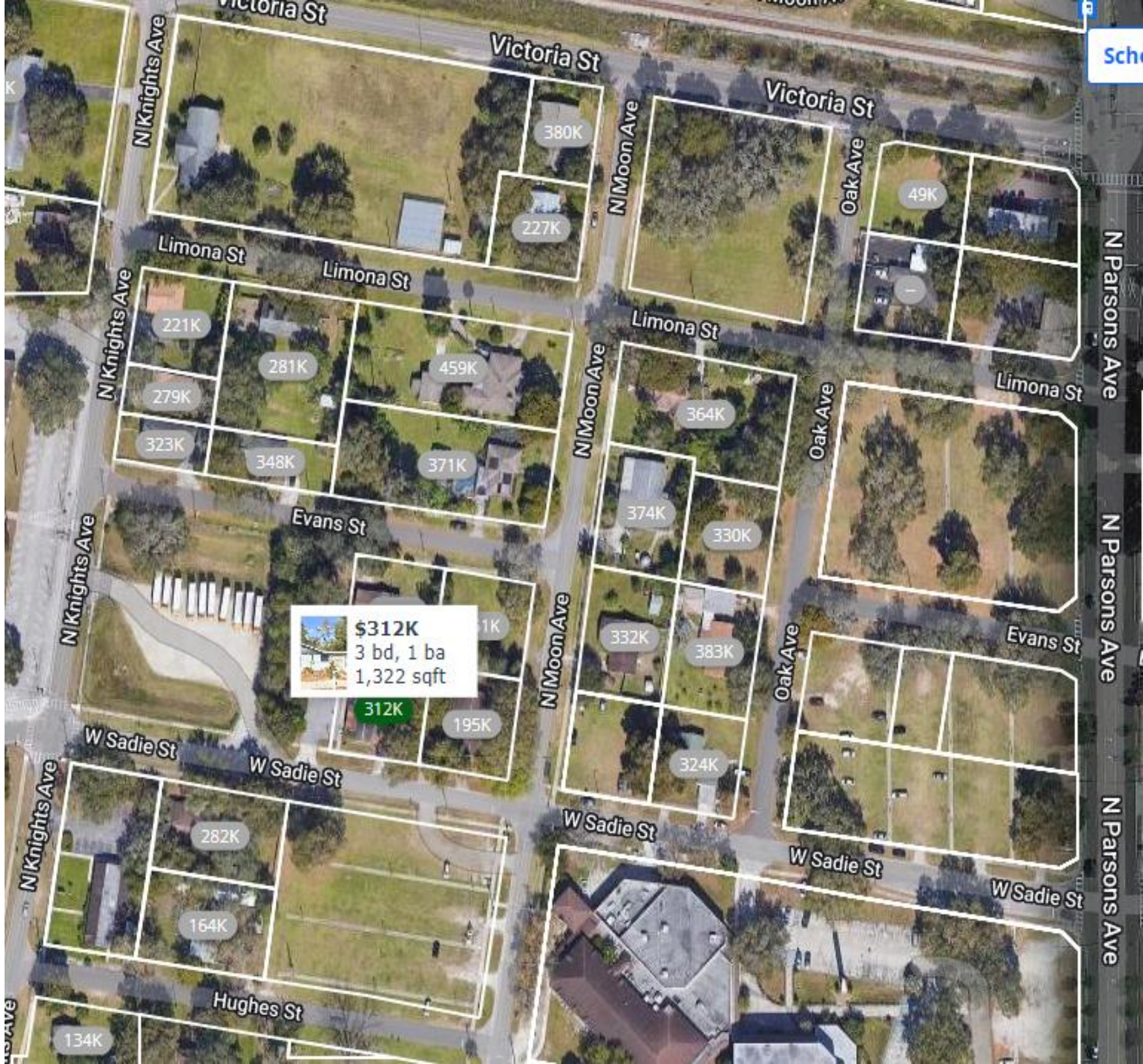
Completed

El Dorado -100  
apartments

Schools

Map

Area 12 NE



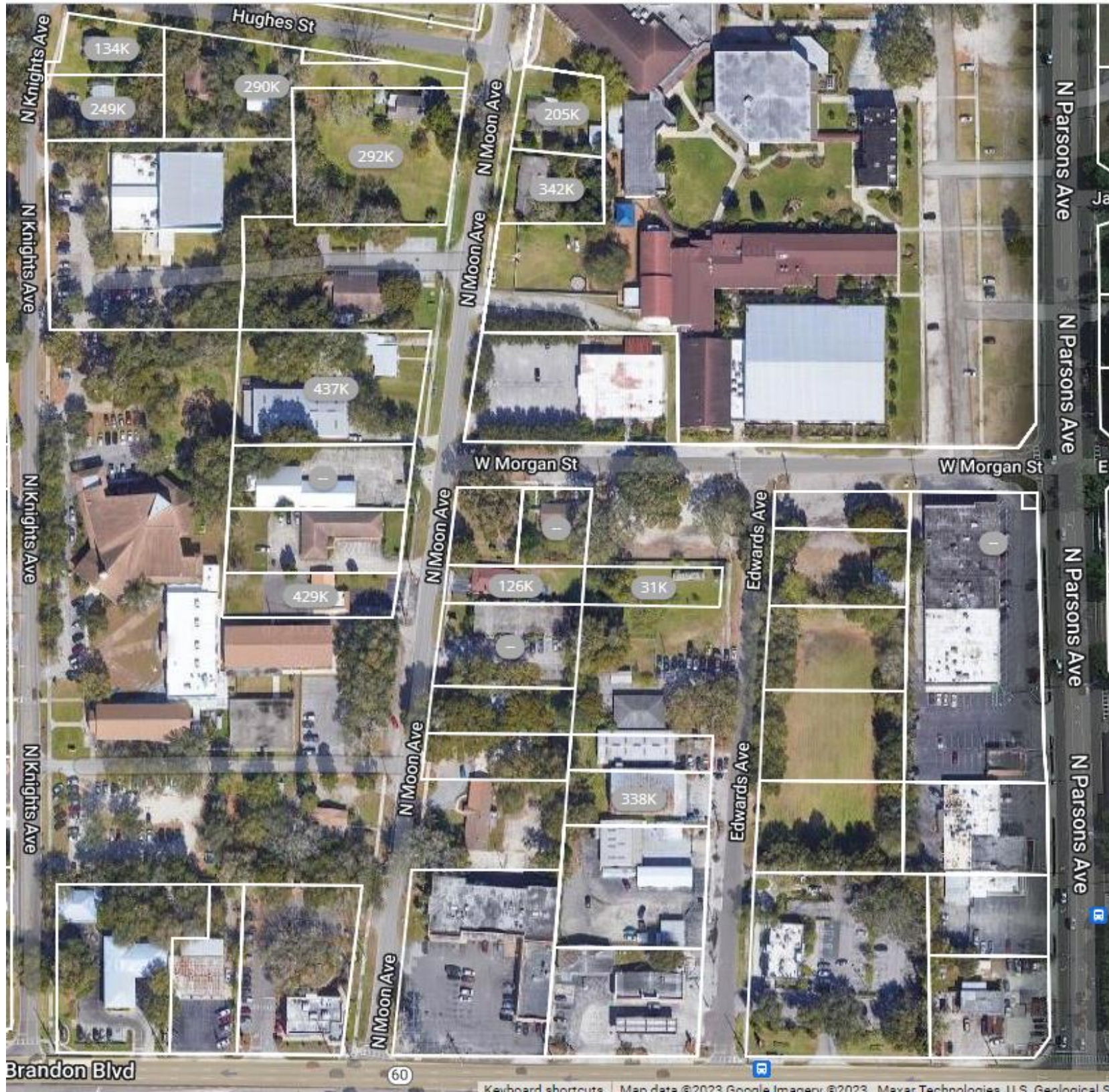
96 Apartments

Blue Sky  
120 apartments

Area 12 SW



Area 12 SE





# 13. 0123014

Brandon, FL-33510

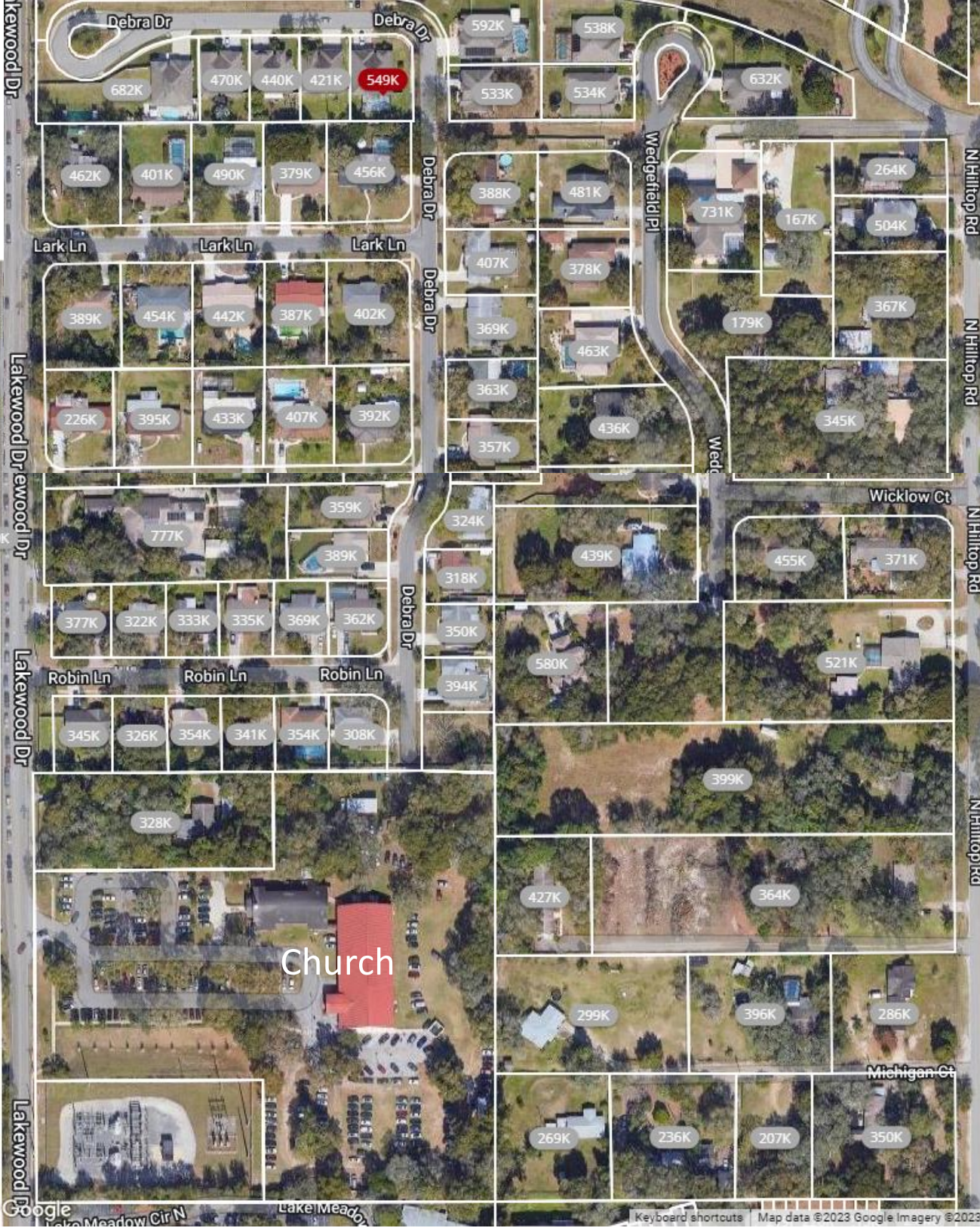
houses	203
apartments	76
<b>TOTAL</b>	<b>279</b>

Please email the code:  
**33510-0123014**  
 to [maps@SaturateUSA.org](mailto:maps@SaturateUSA.org)  
 when this map has been  
 completed.





Area 13 North, 170 homes  
Gated: just drop flyers on porches,  
don't knock on doors.



Area 13 Central, 61 homes

# Area 13 South, 148 homes

Lakewood Apartments, 76 apartments

Carlisle Club, 72 Townhomes







# 13B 0123014B

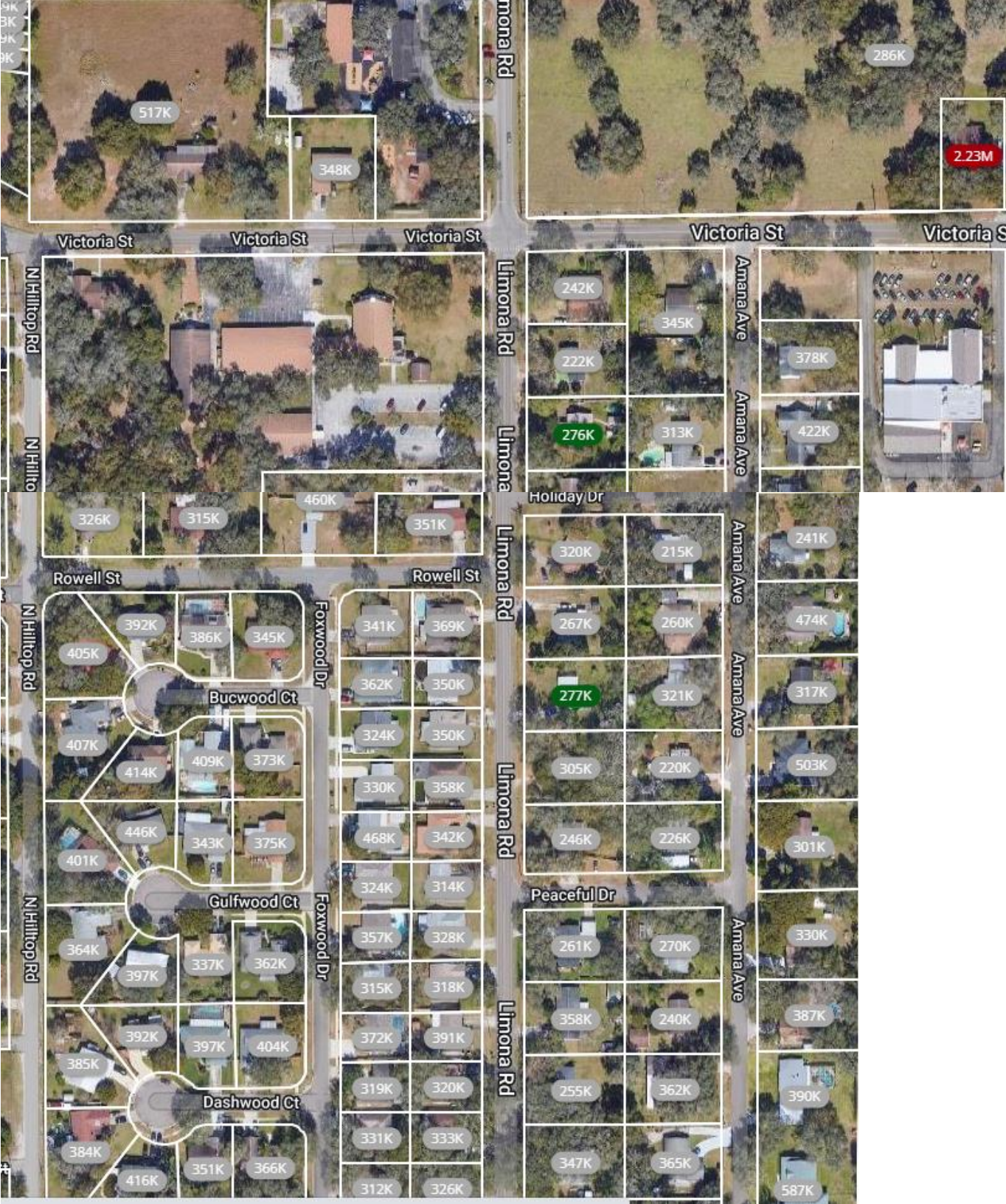
Brandon, FL-33510

houses	162
apartments	120
<b>TOTAL</b>	<b>282</b>

Please email the code:  
**33510-0123014**  
 to [maps@SaturateUSA.org](mailto:maps@SaturateUSA.org)  
 when this map has been  
 completed.

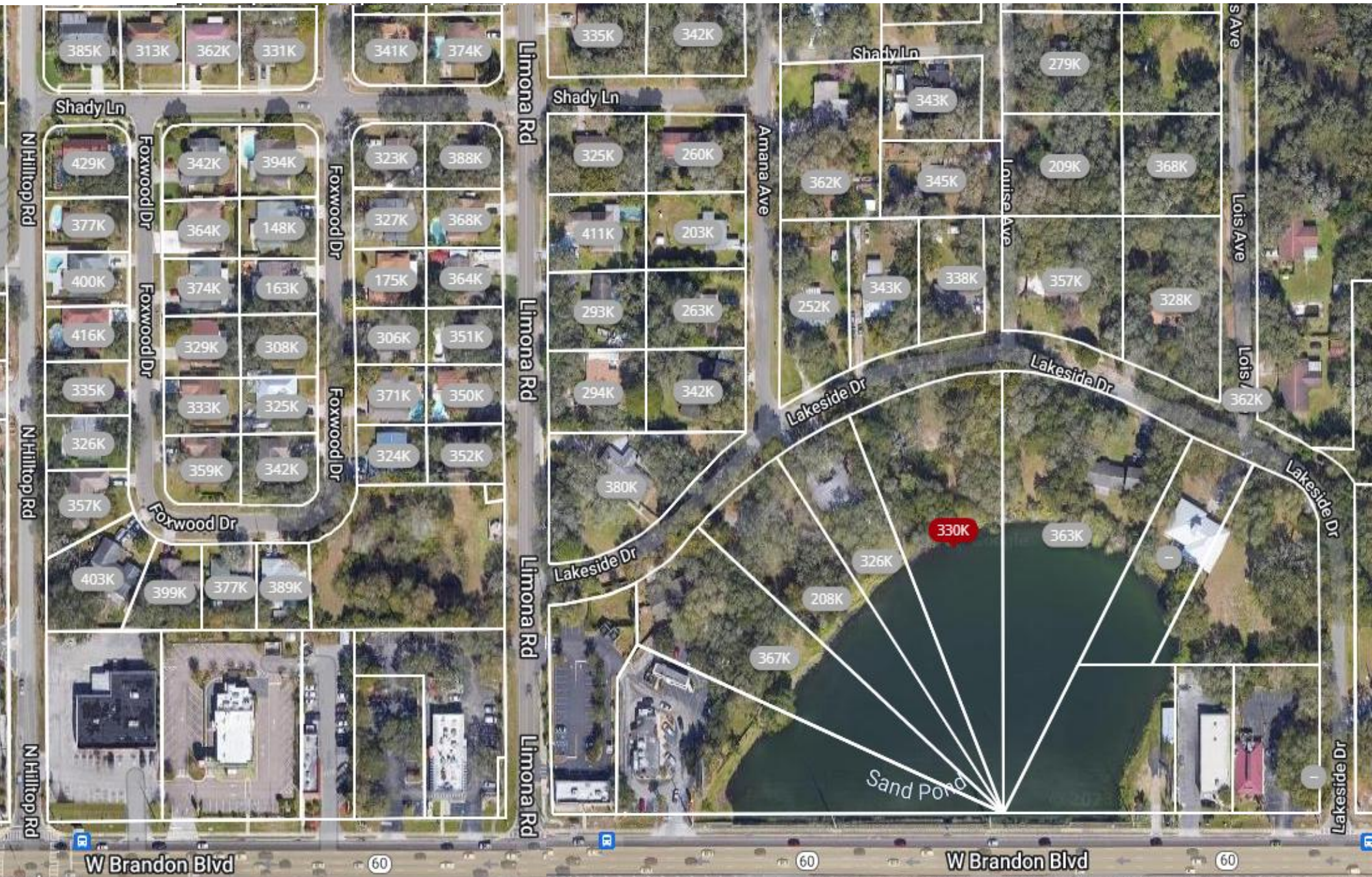
Saturate

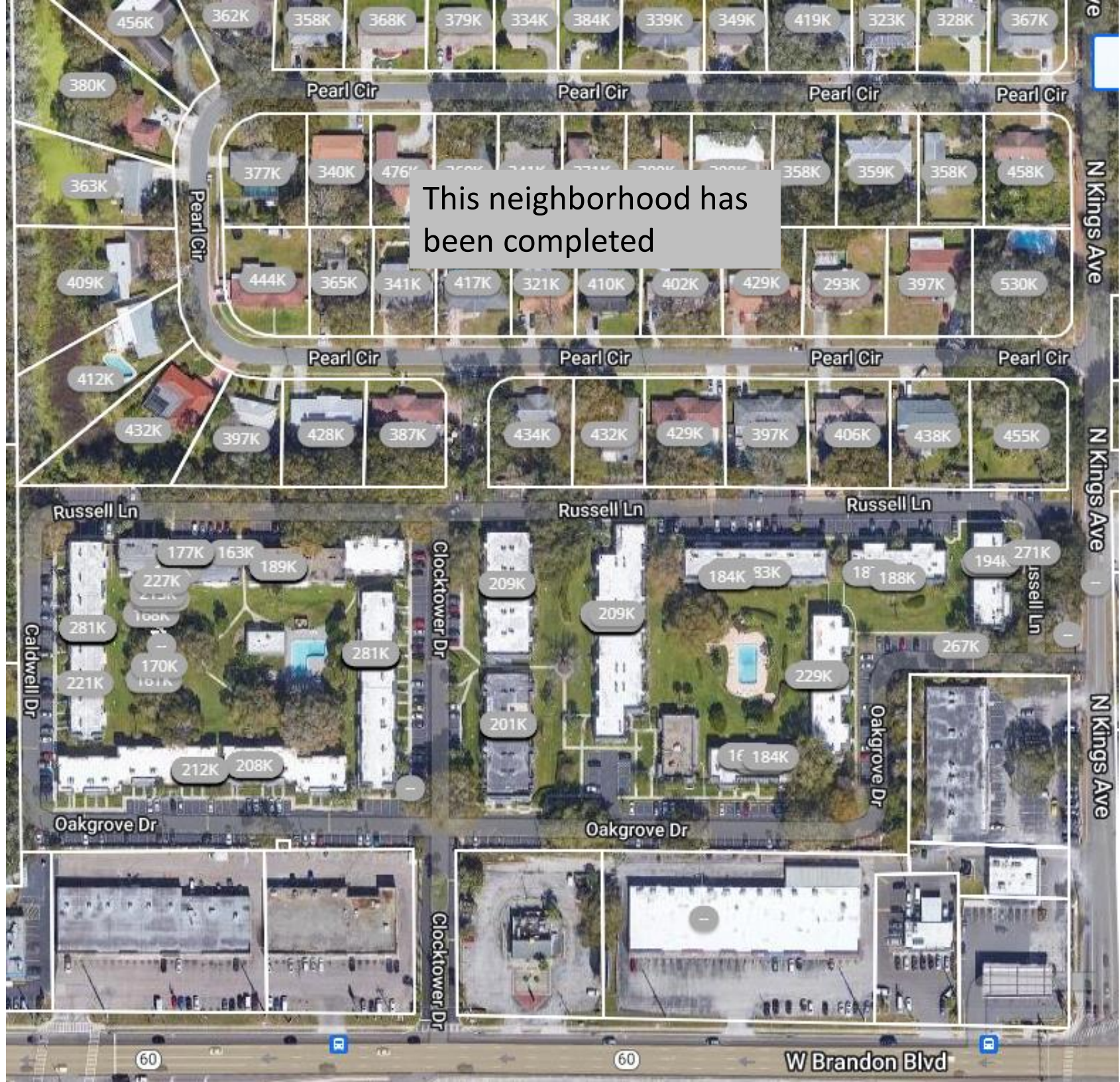




Area 13B North  
90 homes

# Area 13B South 72 homes





This neighborhood has been completed

Area 13B East  
Russelwood Condos  
120 apartments

14. 0123031

Brandon, FL-33510

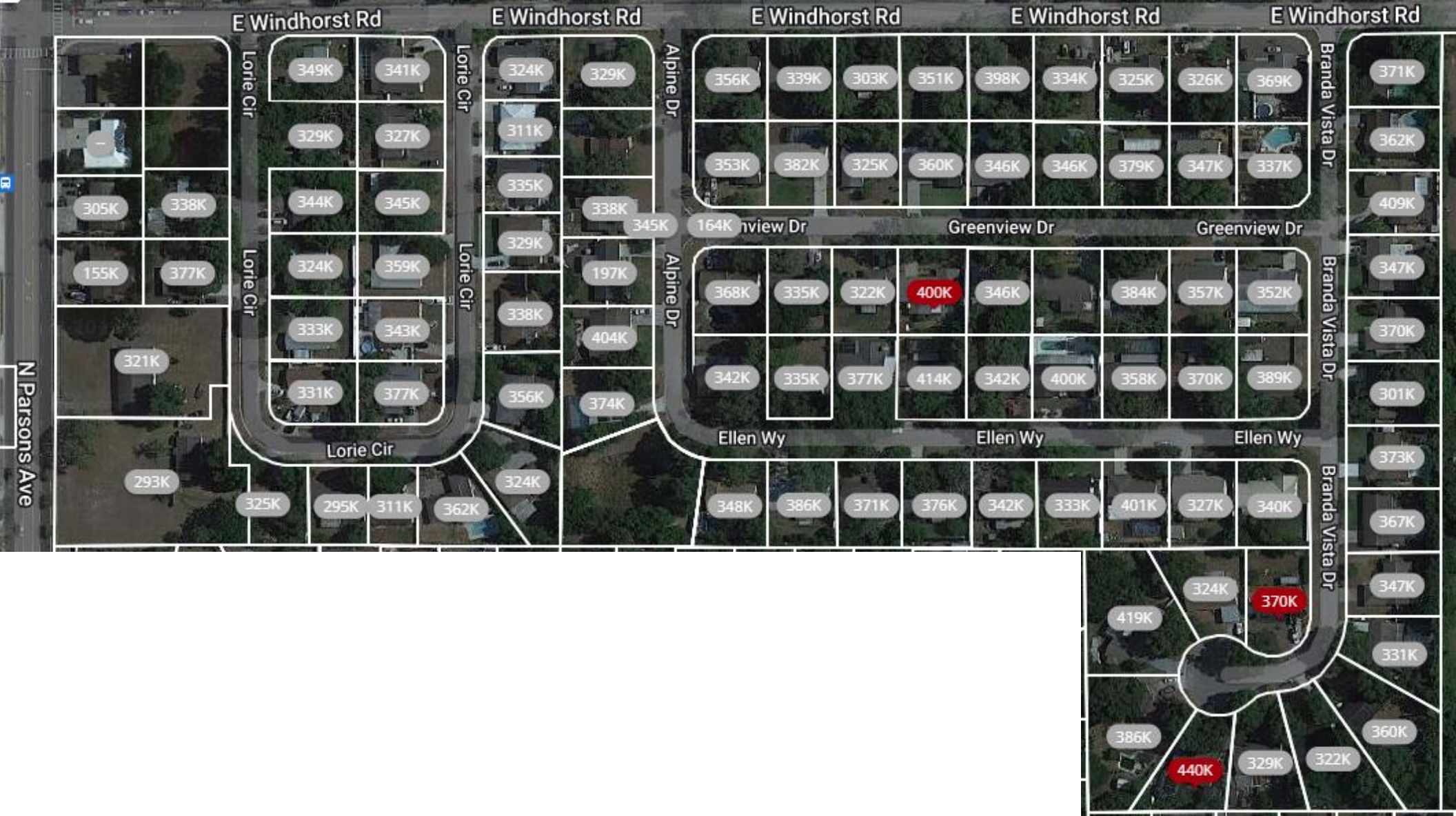
---

houses	436
apartments	0
<b>TOTAL</b>	<b>436</b>

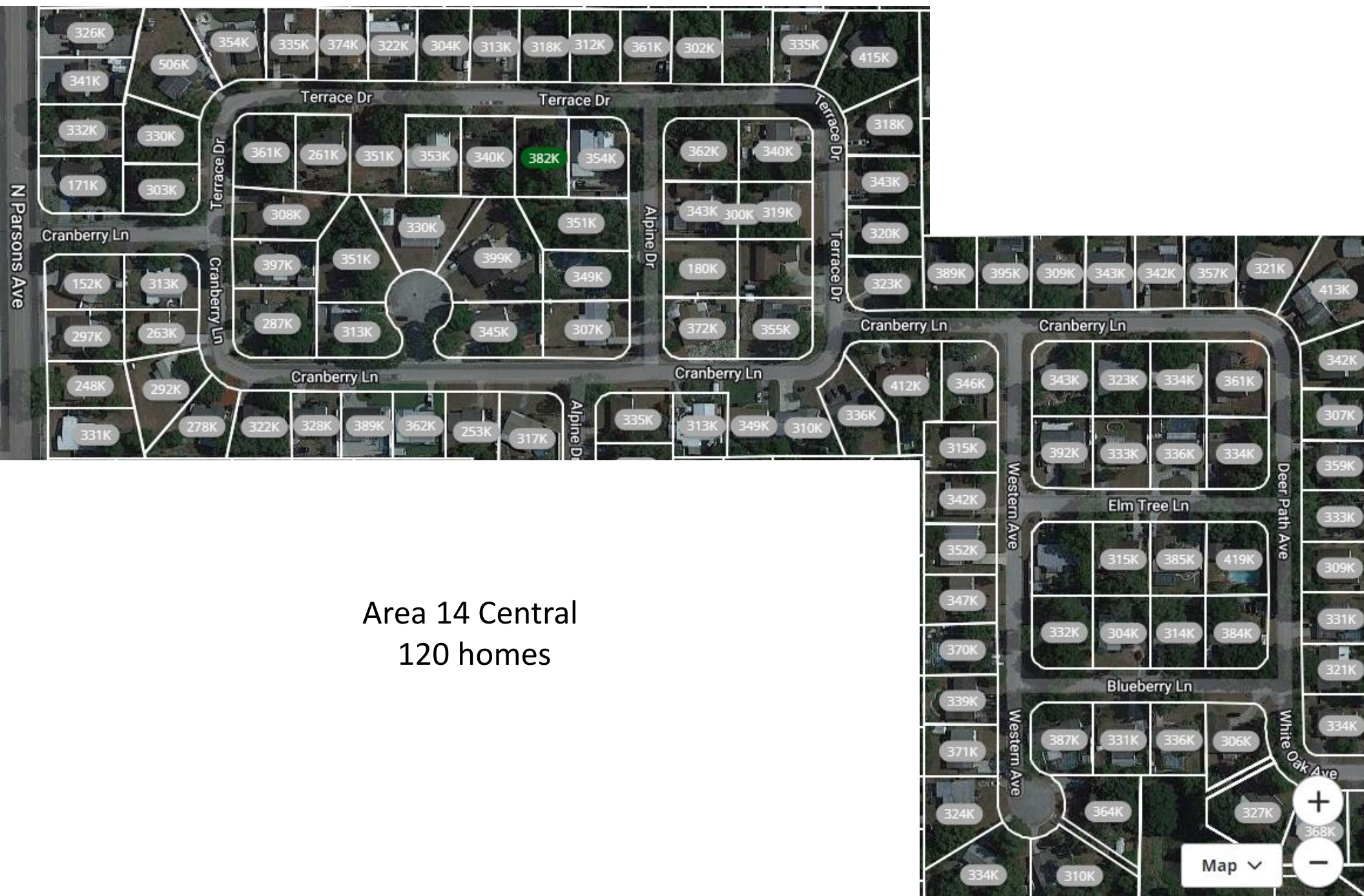
---

Please email the code:  
**33510-0123031**  
to [maps@SaturateUSA.org](mailto:maps@SaturateUSA.org)  
when this map has been  
completed.

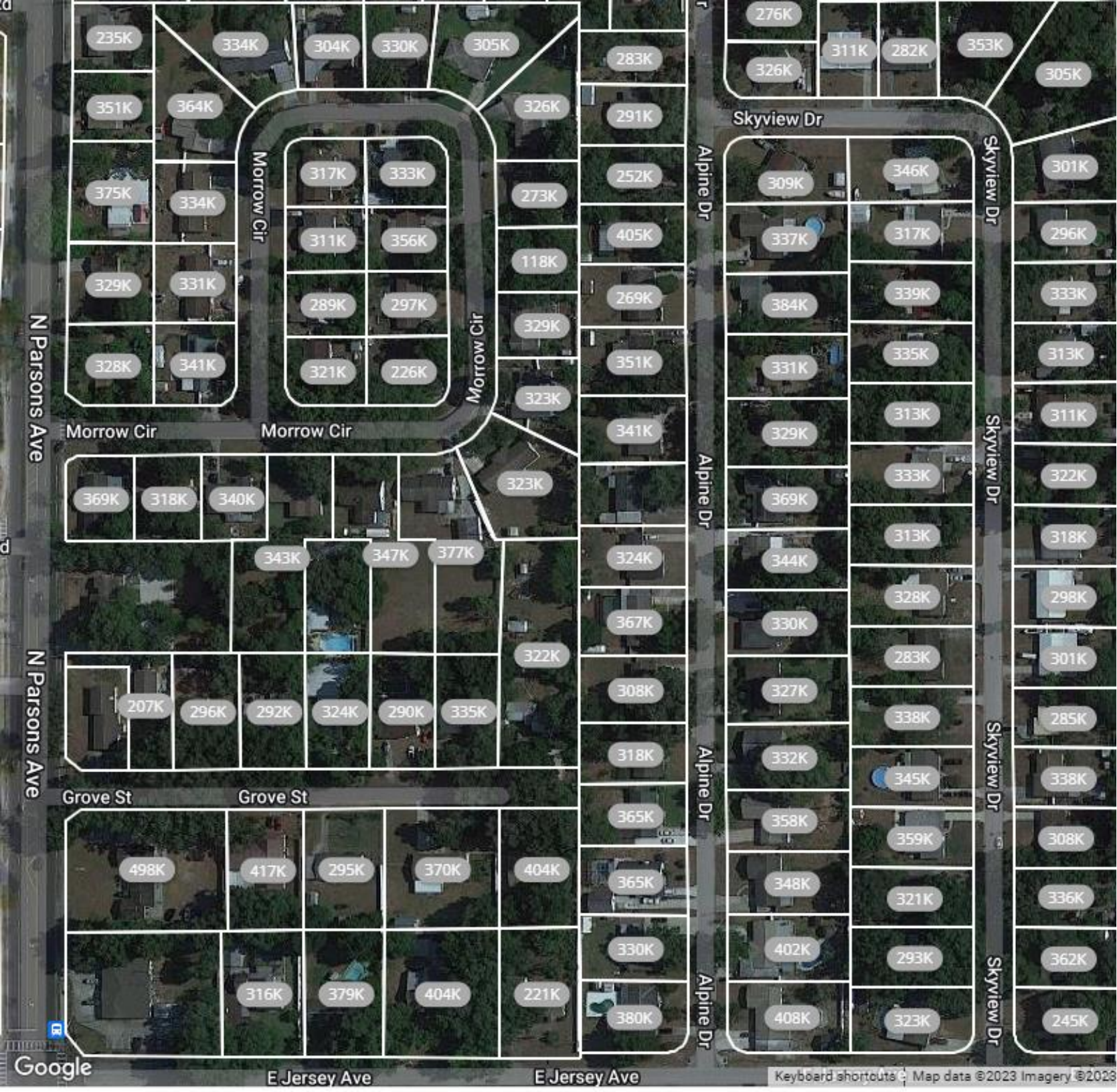




Area 14 NW  
98 homes



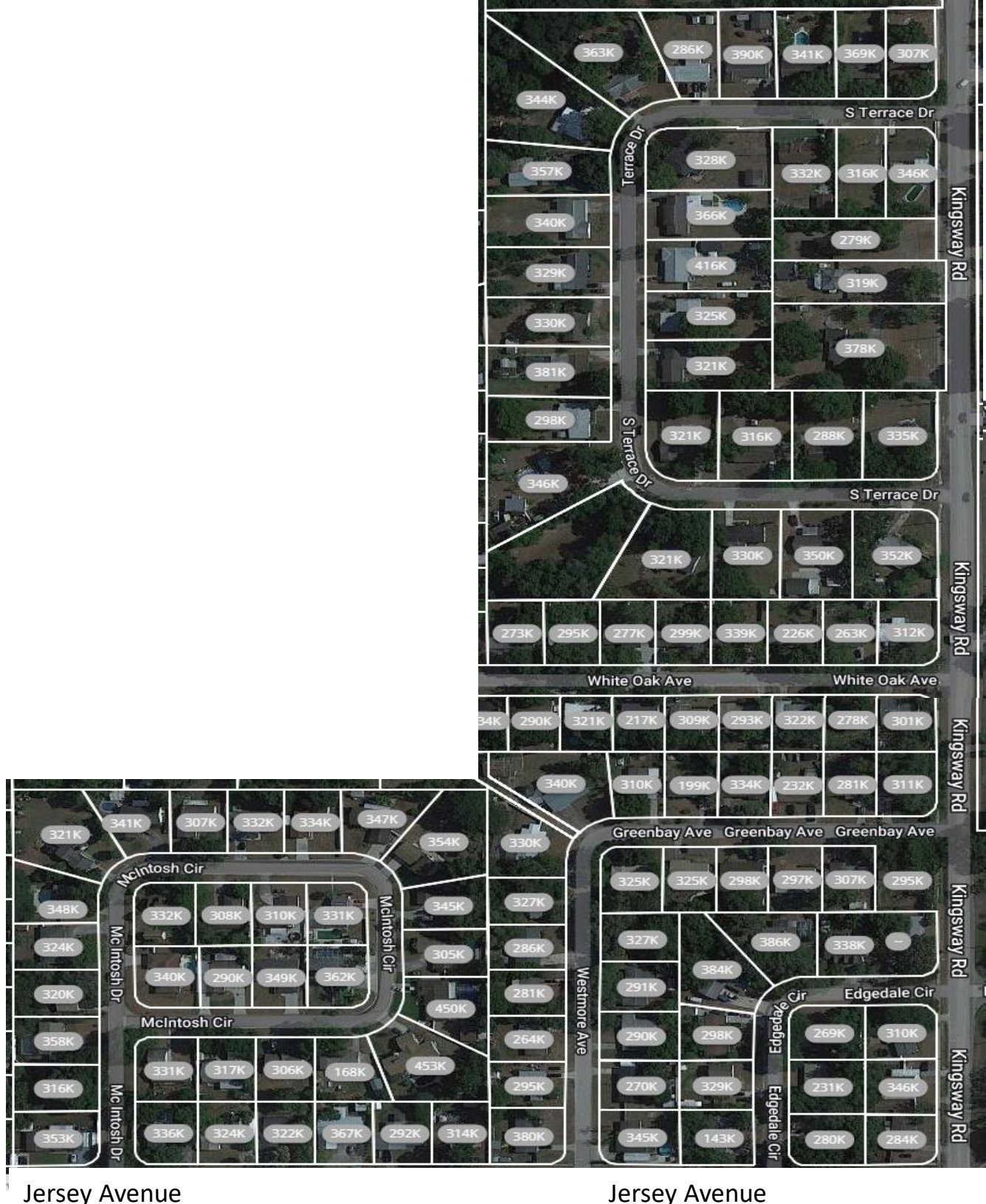
Area 14 Central  
120 homes



Area 14 SW  
117 homes



Area 14 SE  
123 homes



Jersey Avenue

Jersey Avenue

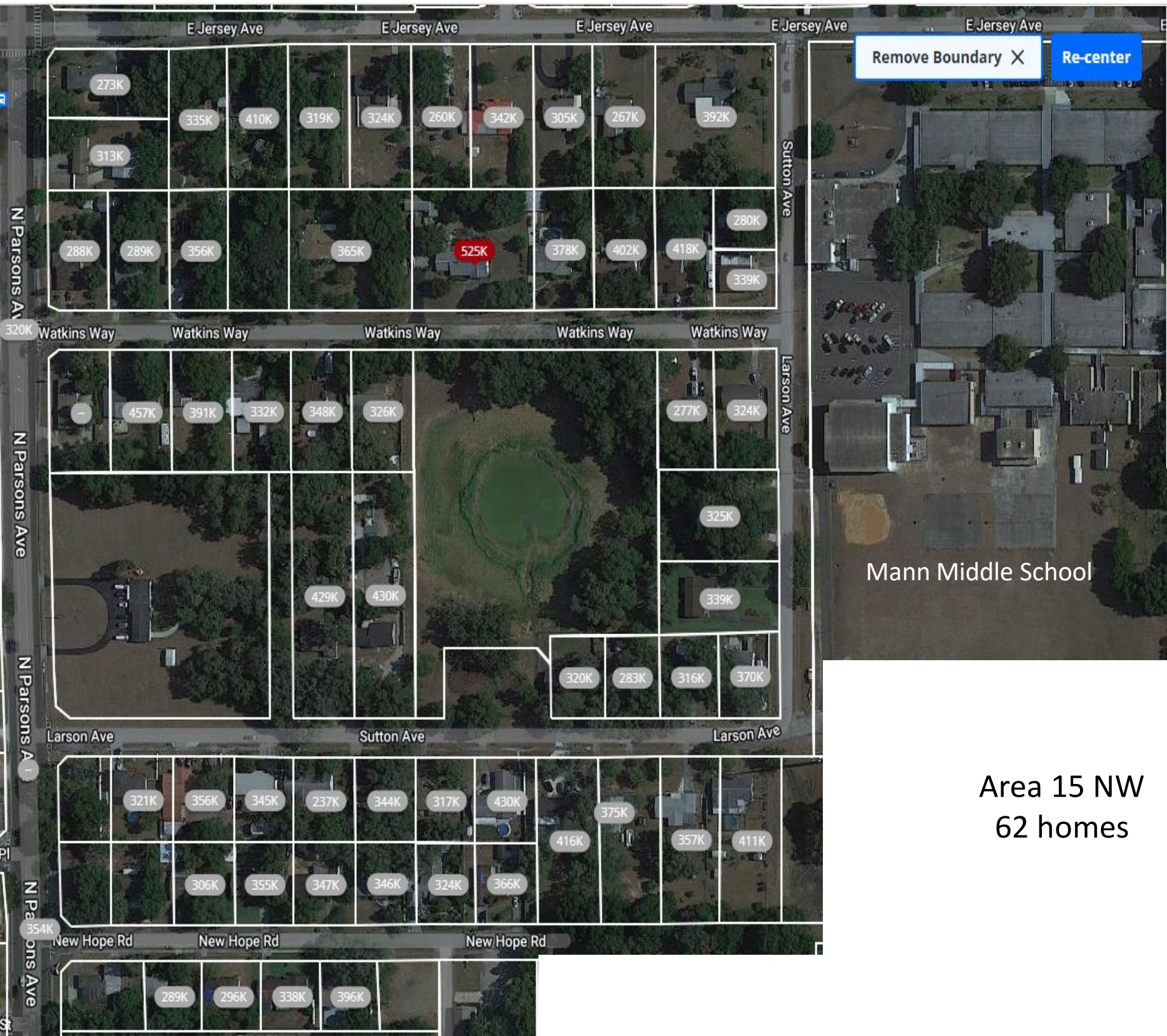
15. 0123032

Brandon, FL-33510

houses	135
apartments	156
<b>TOTAL</b>	<b>291</b>

Please email the code:  
**33510-0123032**  
to [maps@SaturateUSA.org](mailto:maps@SaturateUSA.org)  
when this map has been  
completed.





Remove Boundary X

Re-center

Mann Middle School

Area 15 NW  
62 homes

Area 15 NE  
70 homes





Brandon Oaks  
76 apartments

689K

10.5M

8.85M

Echo

Palms at Palisades  
80 apartments

755K  
742K

213K

Area 15 South  
3 homes  
156 apartments



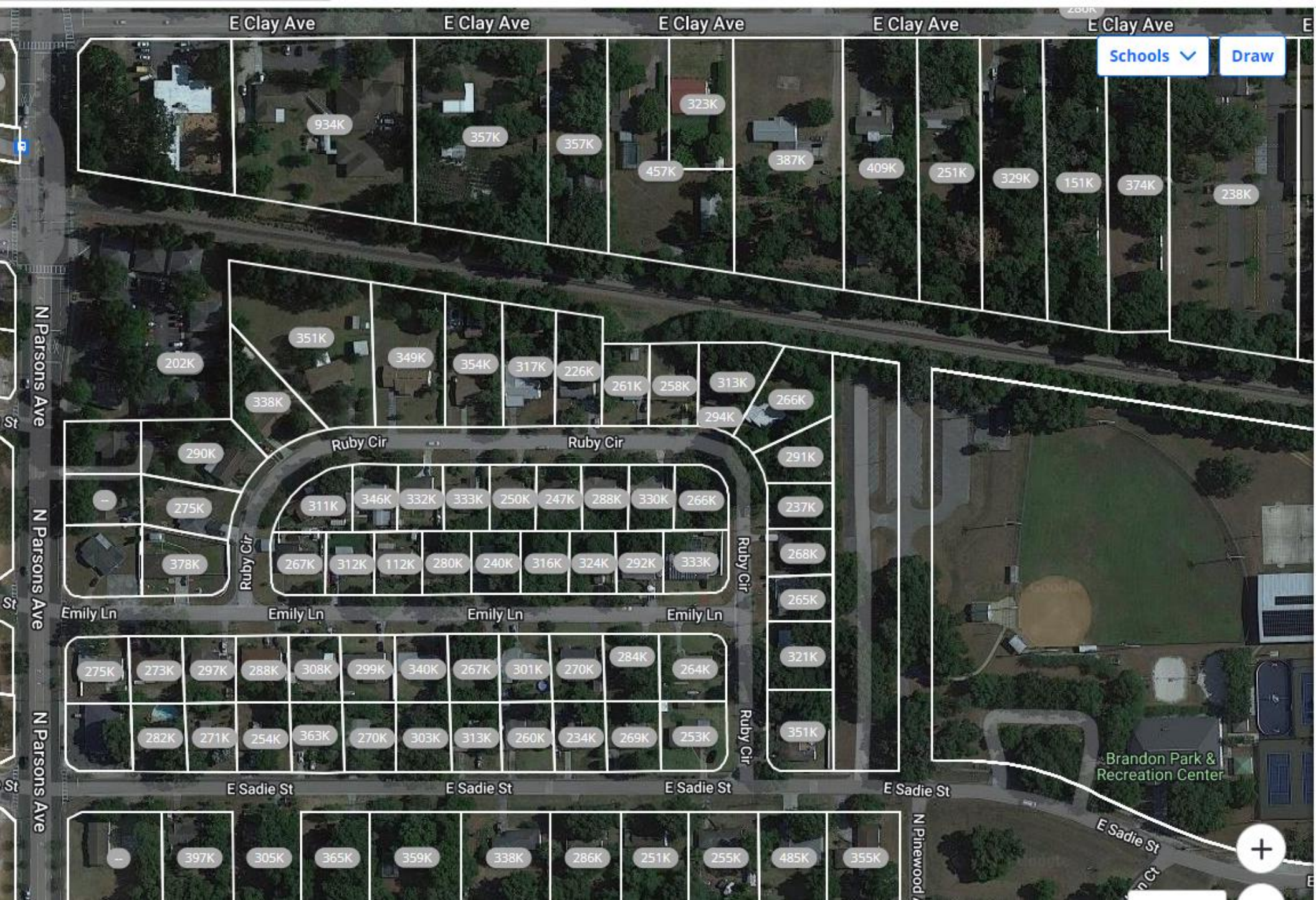
**16. 0123033**

Brandon, FL-33510

houses	297
apartments	85
<b>TOTAL</b>	<b>382</b>

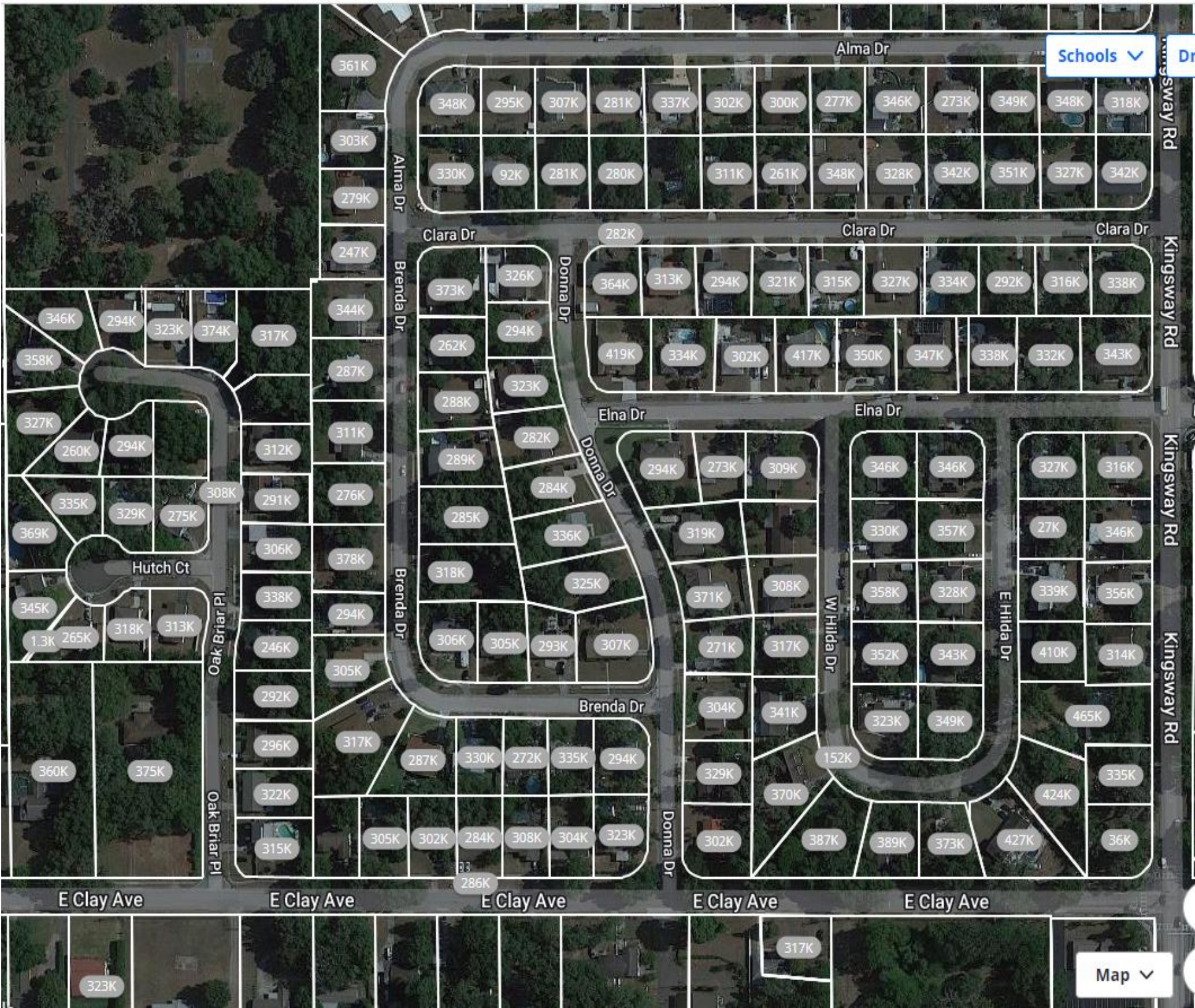
Please email the code:  
**33510-0123033**  
 to [maps@SaturateUSA.org](mailto:maps@SaturateUSA.org)  
 when this map has been  
 completed.





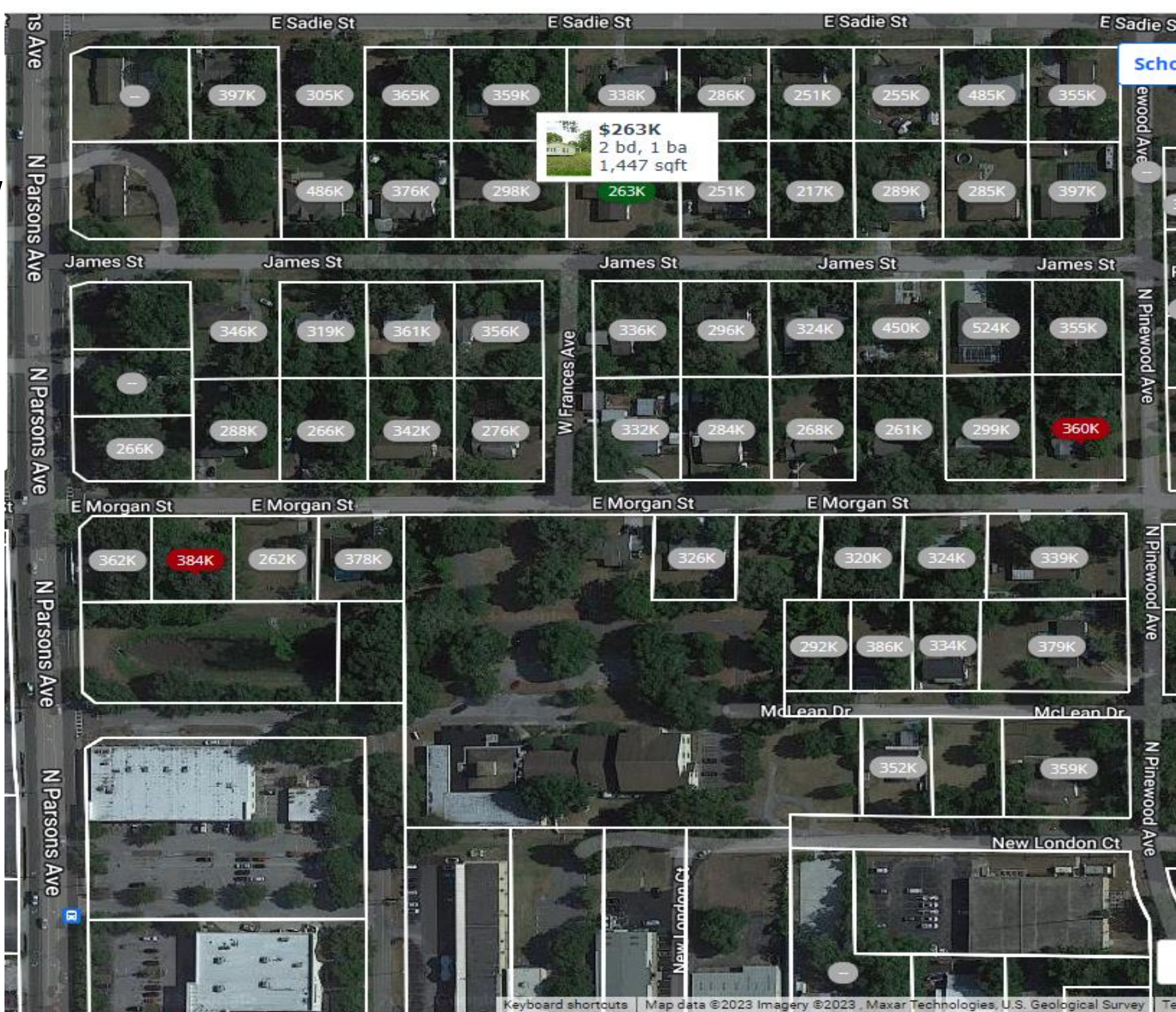
Area 16 NW, 87 homes

Area 16 NE 180 homes



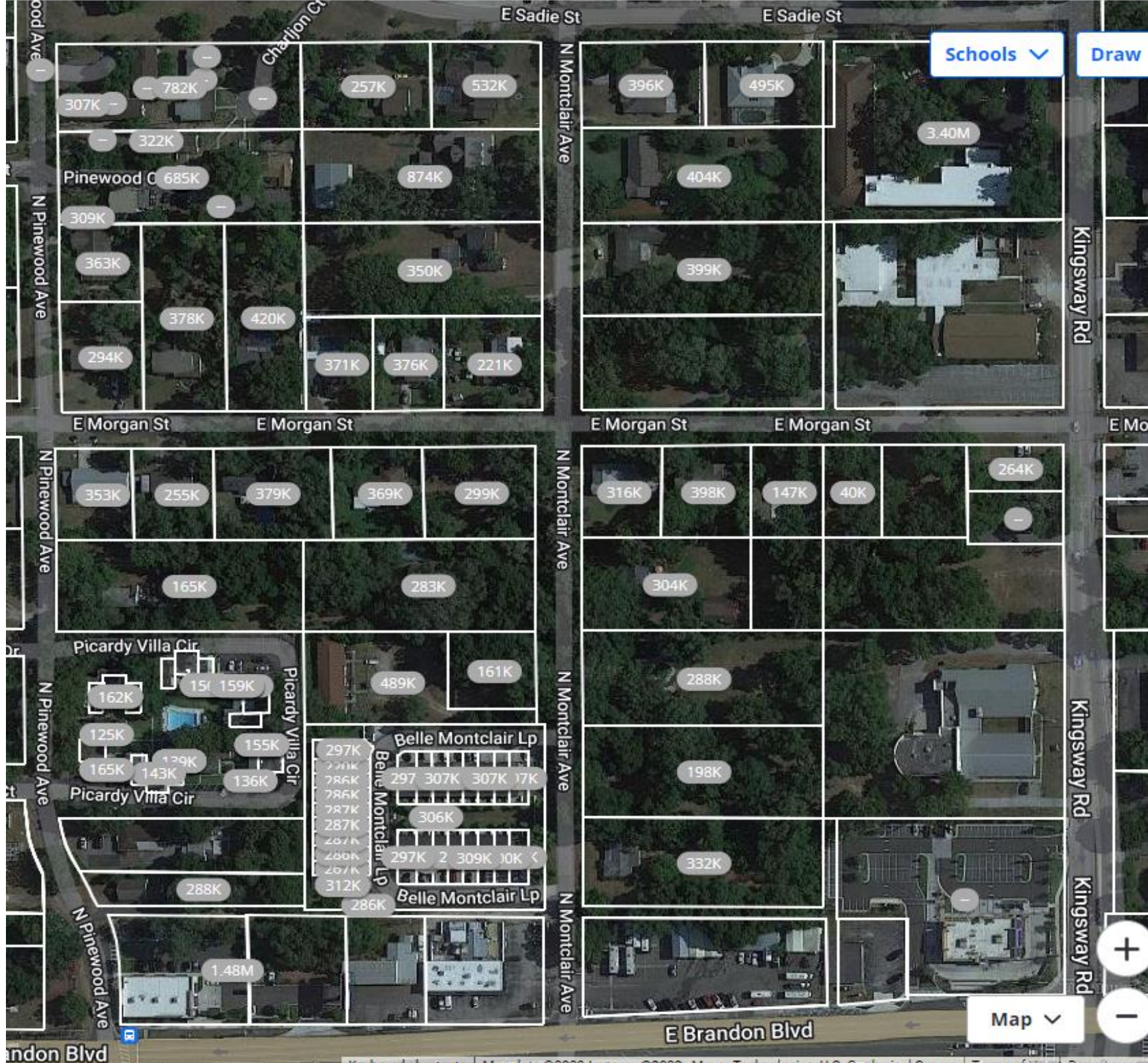


Area 16 SW  
56 homes



Brandon Blvd

Area 16 SE  
85 apts  
36 homes



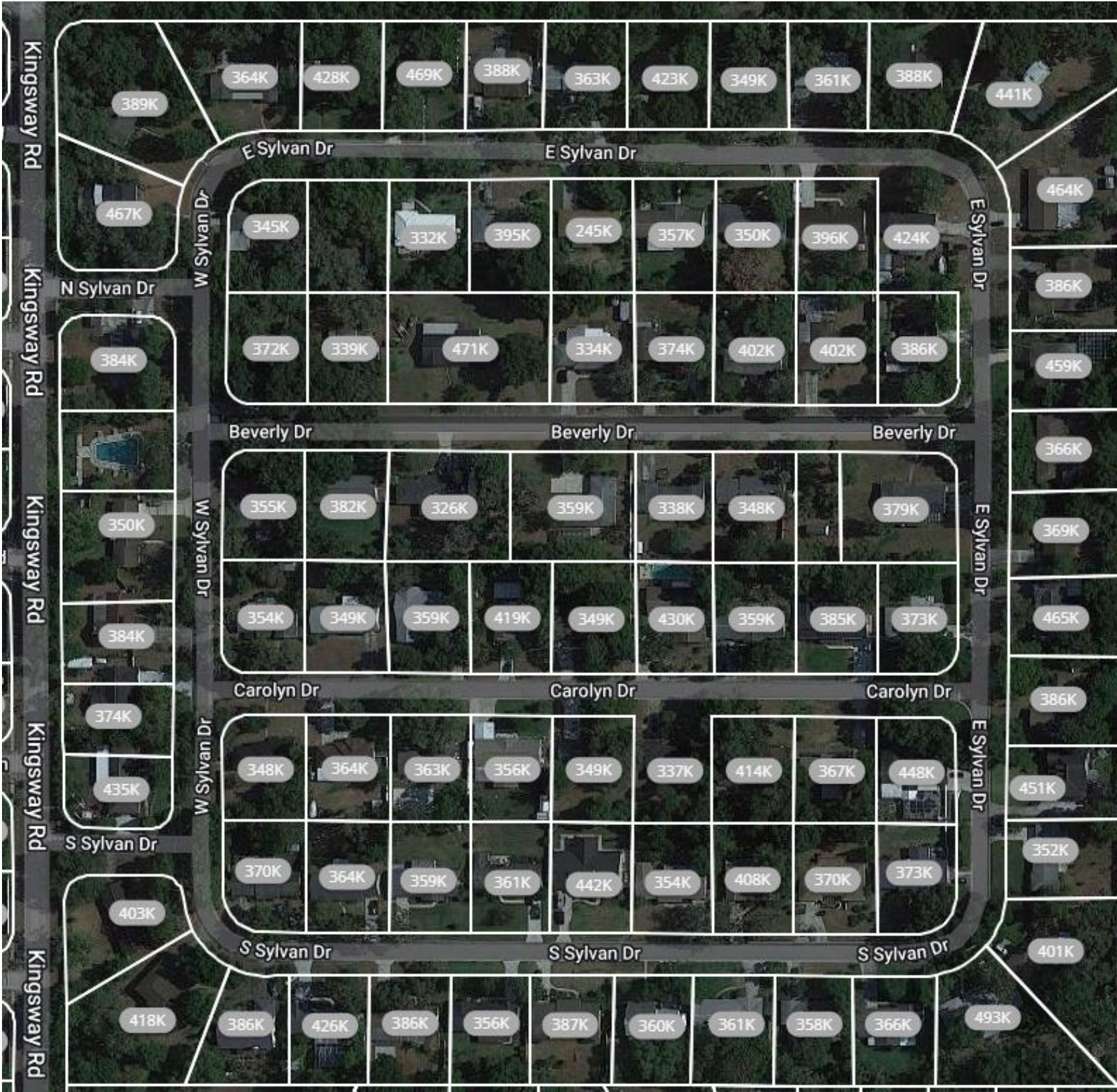
17. 0123041

Brandon, FL-33510

houses	429
apartments	0
<b>TOTAL</b>	<b>429</b>

Please email the code:  
**33510-0123041**  
to [maps@SaturateUSA.org](mailto:maps@SaturateUSA.org)  
when this map has been  
completed.





Area 17 NW  
91 homes

Area 17 NE  
156 homes



Area 17 Central  
87 homes



# Area 17 South 95 homes

